

客户图

NOTES:

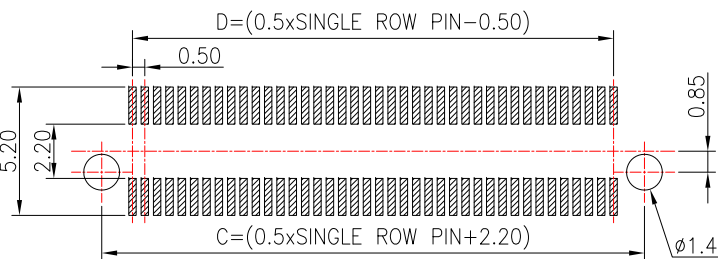
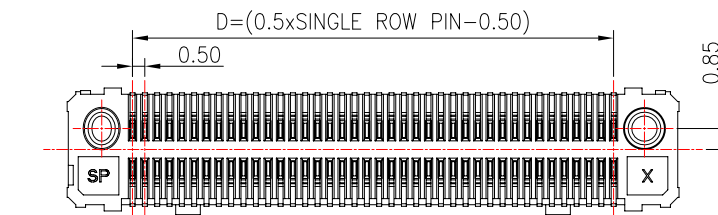
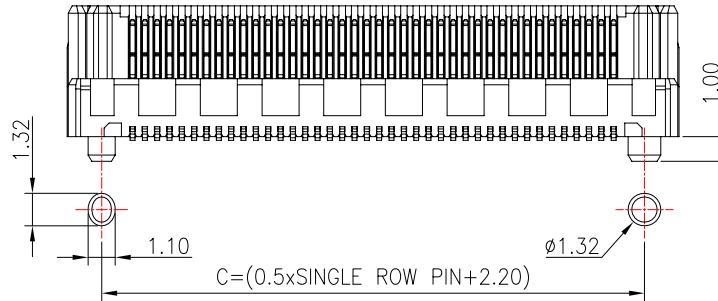
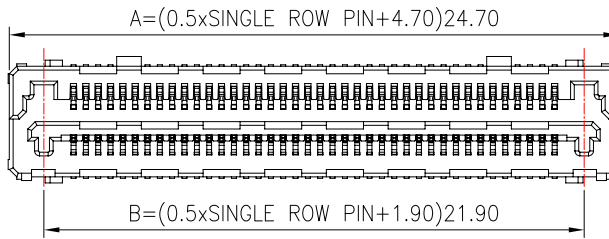
1. FINISH:
 - 1.1 HOUSING: LCP BLACK,UL94V-0.
 - 1.2 CONTACT: PHOSPHOR BRONZE,GOLD (SEE P/N) PLATED IN CONTACT AERA, 80u" MIN MATTE TIN PLATED IN
2. ELECTRICAL:
 - 2.1 CURRENT RATING: 2 A PER PIN(2 PINS POWERED).
 - 2.2 OPERATION TEMPERATURE:-55°C TO +125°C.
- 3.BURR ALLOWANCE: 0.038 Max.
- 4.MINIMUM PUSHOUT FORCE: 2.22N.
- 5.-TR PACKAGING NOT AVAILABLE ON THE 100POSITION.
- 6.PART NO:

66A3-M XXX XX XXX R 01

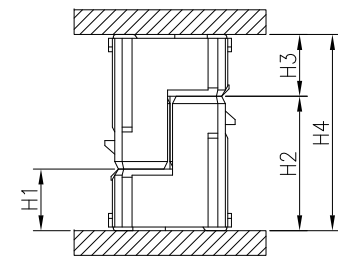
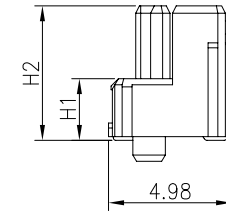
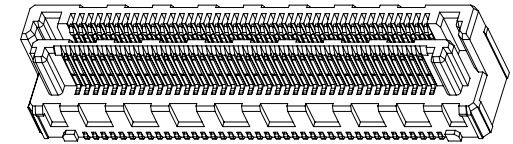
Pin数码	端子电镀:	塑胶高度:	包装方式:
010=2*05PIN	S0=Gold Flash/Tin	039=3.95mm("H2")	R=载带包装
~	S1=1u" Gold/Tin	044=4.45mm("H2")	T=管装
120=2*60PIN	S2=3u" Gold/Tin	054=5.45mm("H2")	
	S3=5u" Gold/Tin		
	S4=10u" Gold/Tin		
	S5=15u" Gold/Tin		
	S6=30u" Gold/Tin		

TABLE1:

No. OF PIN	A	B	C	D
010=2x05PIN	7.20	4.40	4.50	2.00
020=2x10PIN	9.70	6.90	7.00	4.50
030=2x15PIN	12.20	9.40	9.50	7.00
040=2x20PIN	14.70	11.90	12.00	9.50
050=2x25PIN	17.20	14.40	14.50	12.00
060=2x30PIN	19.70	16.90	17.00	14.50
080=2x40PIN	24.70	21.90	22.00	19.50
100=2x50PIN	29.70	26.90	27.00	24.50
120=2x60PIN	34.70	31.90	32.00	29.50



RECOMMENDED PCB LAYOUT(TOP SIDE)
PCB BOARD TOLFRANCE±0.05



MATING HEIGHT

MATING HEIGHT	H1	H2	H3	H4
5.00MM	1.00	3.95	1.00	5.00
5.50MM	1.00	3.95	1.50	5.50
6.00MM	1.50	4.45	1.50	6.00
7.00MM	1.50	4.45	2.50	7.00
6.50MM	2.50	5.45	1.00	6.50
8.00MM	2.50	5.45	2.50	8.00

OPERATION		DRAW		WLY	
X.X	±0.30	DESIGN	Jensen	2019.08.24	
X.XX	±0.20	CHECK	Jack	2019.08.24	
X.XXX	±0.10	APPROVE	Andy	2019.08.22	
Angle	±3°	UNIT	mm	SCALE	1:1
DIM.	TOL				

SOLEPIN 东莞市硕品电子有限公司
Professional connector manufacturer DONGGUAN SOLEPIN ELECTRONICS CO., LTD.

REV	DATE	MODIFICATION DESCRIPTION	CHANGE	APPROVE
AO		NEW		

SIZE	A4	PART NO.	66A3-MXXXXXXXXR01
SHEET	1/1	TITLE:	0.50mm BTB 公母同体 高速连接器
PROJ.		DRAW NO.	SP-396