

客户图

NOTES:

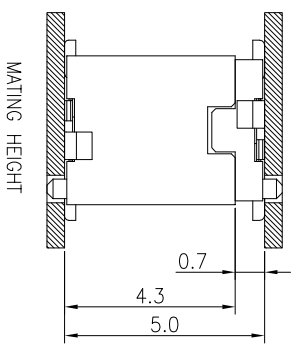
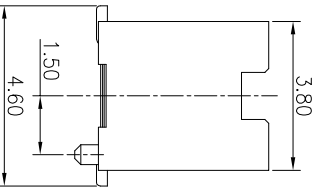
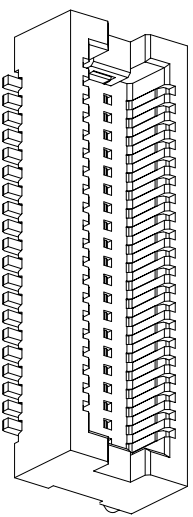
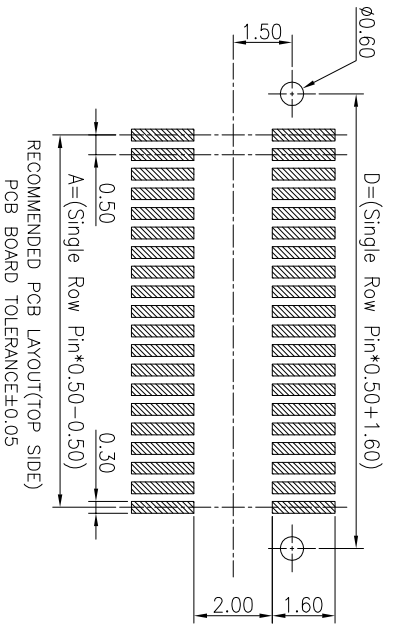
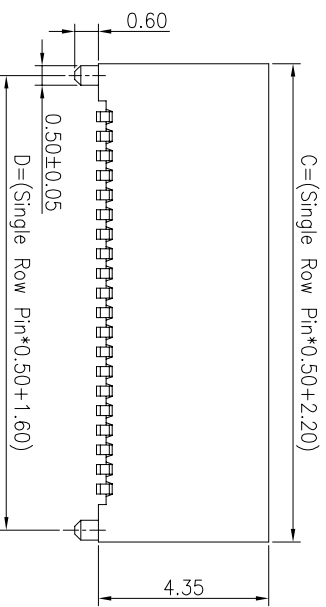
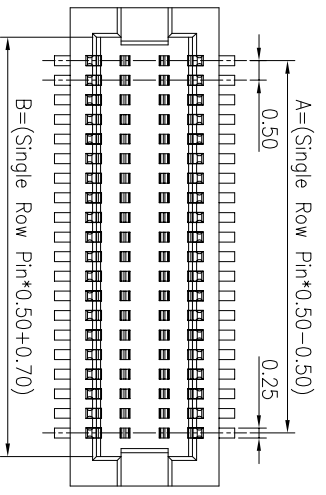
- FINISH:
 - HOUSING: LCP BLACK, UL94V-0.
 - CONTACT: PHOSPHOR COPPER.
 GOLD (SEE P/N) PLATED,
 50u" MIN. NICKEL UNDERPLATED OVER ALL.
- ELECTRICAL:
 - CURRENT RATING: 0.3 A.
 - VOLTAGE RATING: 50 V AC.
 - CONTACT RESISTANCE: 50mΩ MAX.
 - INSULATION RESISTANCE: 500MΩ MIN.
 - WITHSTANDING VOLTAGE: 150V AC/1MINUTE.
 - OPERATION TEMPERATURE: -40°C TO +105°C.
- ORDER INFORMATION:

66A1-F XXX XX 043 R 01

Pin 数码: 端子电镀: 塑胶高度: 包装方式:
 010=2*05PIN G0=Gold Flash 043=4.35mm R=REEL
 ~ G1=1u" Gold
 200=2*100PIN G2=3u" Gold
 G3=5u" Gold
 G4=10u" Gold

TABLE 1:

No. OF PIN	A	B	C	D
010=2x05PIN	2.00	3.20	4.70	4.10
014=2x07PIN	3.00	4.20	5.70	5.10
020=2x10PIN	4.50	5.70	7.20	6.60
030=2x15PIN	7.00	8.20	9.70	9.10
032=2x16PIN	7.50	8.70	10.20	9.60
036=2x18PIN	8.50	9.70	11.20	10.60
040=2x20PIN	9.50	10.70	12.20	11.60
050=2x25PIN	12.00	13.20	14.70	14.10
060=2x30PIN	14.50	15.70	17.20	16.60
080=2x40PIN	19.50	20.70	22.20	21.60
100=2x50PIN	24.50	25.70	27.20	26.60
120=2x60PIN	29.50	30.70	32.20	31.60
160=2x80PIN	39.50	40.70	42.20	41.60
200=2x100PIN	49.50	50.70	52.20	51.60



OPERATION

XX	±0.40
XX	±0.25
X:XXX	±0.15
Angle	±3°

DRAW

DESIGN	Jensen
CHECK	Jack
APPROVE	Andy

SOLEPIN 东莞市硕品电子有限公司
 Professional connector manufacturer DONGGUAN SOLEPIN ELECTRONICS CO., LTD.

SIZE: A4
 SHEET: 1/1
 PART NO.: 66A1-FXXXXX043R01

TITLE: 0.50mm BTB 母座 立式80° SMT H15.0mm 带柱 无接地片
 DRAW NO.: SP-593

REV	DATE	MODIFICATION DESCRIPTION	CHANGE	APPROVE	DIM.	TOL	UNIT	SCALE	PROJ.	DRAW NO.
A0		NEW					mm	1:1		SP-593

客户图

NOTES:

- FINISH:
 - HOUSING: LCP BLACK, UL94V-0.
 - CONTACT: PHOSPHOR COPPER.
- 1.2 CONTACT: (SEE P/N) PLATED, 50u" MIN. NICKEL UNDERPLATED OVER ALL.
- ELECTRICAL:
 - CURRENT RATING: 0.3 A.
 - VOLTAGE RATING: 50 V AC.
 - CONTACT RESISTANCE: 50mΩ MAX.
 - INSULATION RESISTANCE: 500MΩ MIN.
 - WITHSTANDING VOLTAGE: 150V AC/1MINUTE.
 - OPERATION TEMPERATURE: -40°C TO +105°C.
- ORDER INFORMATION:

66A1-M XXX XX 022 R 01

Pin 数码 端子电镀: 塑胶高度: 包装方式:

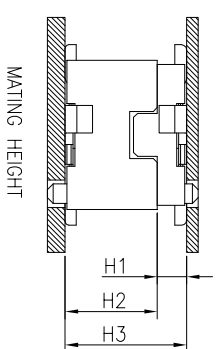
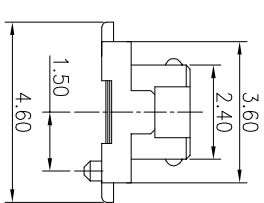
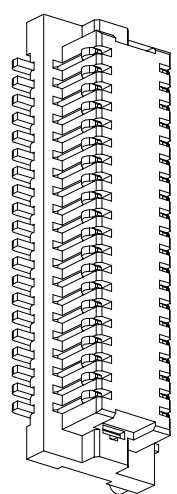
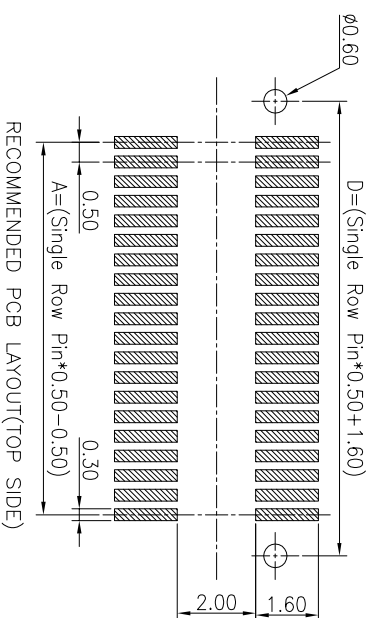
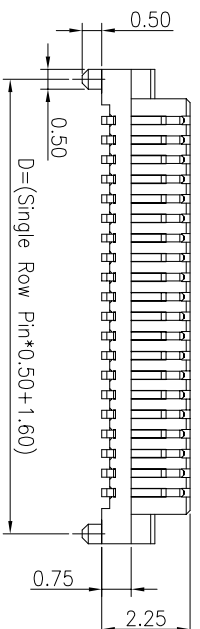
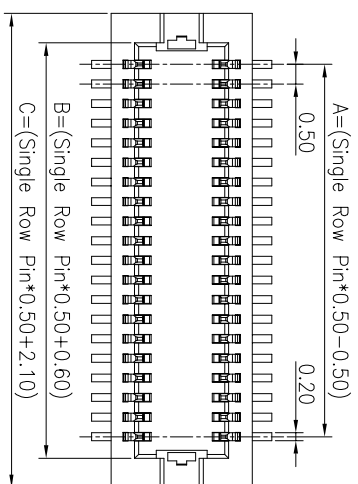
010=2*05PIN G0=Gold Flash 022=2.20mm R=REEL

~ G1=1u" Gold G2=3u" Gold G3=5u" Gold G4=10u" Gold

200=2*100PIN

TABLE1:

No. OF PIN	A	B	C	D
010=2x05PIN	2.00	3.10	4.60	4.10
014=2x07PIN	3.00	4.10	5.60	5.10
020=2x10PIN	4.50	5.60	7.10	6.60
030=2x15PIN	7.00	8.10	9.60	9.10
032=2x16PIN	7.50	8.60	10.10	9.60
036=2x18PIN	8.50	9.60	11.10	10.60
040=2x20PIN	9.50	10.60	12.10	11.60
050=2x25PIN	12.00	13.10	14.60	14.10
060=2x30PIN	14.50	15.60	17.10	16.60
080=2x40PIN	19.50	20.60	22.10	21.60
100=2x50PIN	24.50	25.60	27.10	26.60
120=2x60PIN	29.50	30.60	32.10	31.60
160=2x80PIN	39.50	40.60	42.10	41.60
200=2x100PIN	49.50	50.60	52.10	51.60



MATING HEIGHT	H1	H2	H3
3.00mm	0.7	2.3	3.0
5.00mm		4.3	5.0

SOLEPIN 东莞市硕品电子有限公司
Professional connector manufacturer DONGGUAN SOLEPIN ELECTRONICS CO., LTD.

REV	DATE	MODIFICATION DESCRIPTION	CHANGE	APPROVE	OPERATION	DRAW	WLY	DESIGN	CHECK	APPROVE	UNIT	SCALE	PROJ.	PART NO.	TITLE:	DRAW NO.
A1	2023/01/03	修改定位柱高度, 由0.60改为0.50	ZDG		XX	±0.40	Jensen	XX	±0.25	Jack	mm	1:1	1/1	66A1-MXXXXX022R01	0.50mm B1B 公头 立式180° SMT 带柱 无接地片	SP-594
A0		NEW			XX	±0.15	Andy	XX	±0.15	Andy	mm	1:1				

REV	DATE	MODIFICATION DESCRIPTION	CHANGE	APPROVE	OPERATION	DRAW	WLY	DESIGN	CHECK	APPROVE	UNIT	SCALE	PROJ.	PART NO.	TITLE:	DRAW NO.
1					XX	±0.40	Jensen	XX	±0.25	Jack	mm	1:1				